

REFERENCES





ALUMINIUM SHAPED BY ARCHITECTURE



Paul-Klee-Center

Location	Dubai, UAE
System	GUTMANN F60* Curtain Wall System
Architect	RMJM
Client	SABA Real estate
Fabricator	Arabian Aluminium Co.
Completion	2008
Project size	33,000 m ² glazing surface, 150 m height, 37 floors

Characteristics

Saba Commercial Tower is the first freehold luxury office project in the UAE, with a value of \$170 million. The tower offers a unique opportunity to business professionals to own offices. The Tower facilities are covered by the external envelope of GUTMANN F60* Curtain Wall System.



SABA Commercial Tower

Location	Dubai, UAE
System	GUTMANN F60* Curtain Wall System
Architect	RMJM
Client	SABA Real estate
Fabricator	Arabian Aluminium Co.
Completion	2008
Project size	33,000 m ² glazing surface, 150 m height, 37 floors

Characteristics

Saba Commercial Tower is the first freehold luxury office project in the UAE, with a value of \$170 million. The tower offers a unique opportunity to business professionals to own offices. The Tower facilities are covered by the external envelope of GUTMANN F60* Curtain Wall System.



Gold Crest V1 Tower

Location	Dubai, UAE
System	GUTMANN F60* Curtain Wall System
Architect	WS Atkins & Partners Overseas
Client	Star Giga Establishment
Fabricator	Arabian Aluminium Co.
Completion	2008
Project size	36,000 m ² glazing surface, 159 m height, 40 floors

Characteristics

The \$220 million worth project is a residential tower comprising of 40 floors designed around a rectangular plan form to achieve views from all apartments on every level. The tower uses the F60* Curtain Wall System two/four-sided structural glazing.



Gold Crest Executive Tower

Location	Dubai, UAE
System	GUTMANN F60* Curtain Wall System
Architect	DAR Consultant
Client	ETA Star Properties & Giga Group
Fabricator	Arabian Aluminium Co.
Completion	2009
Project size	27,000 m ² glazing surface, 165 m height, 40 floors

Characteristics

The Gold Crest Executive Tower is an ultramodern project, that includes luxurious facilities, basement retail areas, business centres and a first-floor suite of meeting rooms. All these facilities are covered by the external envelope of GUTMANN F60* Curtain Wall System.



Makkah Royal Clock Tower

Location	Makkah, Saudi-Arabia
System	GUTMANN EF 100* Unitised Curtain Wall
Architect	DAR AL Handasah
Client	SBG Group
Fabricator	United Arab Aluminium
Completion	2010
Project size	Total area: 1.4 milion m ² , 601 m height

Characteristics

Makkah Royal Clock Tower is the highest hotel in the world, the second highest building in the world, and the highest clock tower in the world. In total, up to 100,000 people could be housed inside all the 7 towers of the development. The GUTMANN EF 100 Unitised Curtain Wall System was tailor-designed based on the EF 68 system for the building envelop. The major advantage is that the frame of the facade was designed as a system for internal glazing. Therefore, if necessary the change of the glazing units of the high main tower can be done very easily from inside. The sealing of the façade is perfectly matched using a three level saddle gasket and ensures excellent tightness performance proved in project tests and on site.



Madina Tower

Location	Dubai, UAE
Systems	GUTMANN F60* Curtain Wall System
Architect	KEO
Client	Reef Real Estate Investment Co. L.L.C.
Fabricator	Arabian Aluminium Co.
Completed	2010
Project size	33,000 m ² glazing surface, 34 floors

Characteristics

Madina Tower is a residential building located in the Jumeirah Lakes on Sheikh Zayed Road. The interior of Madina Tower is designed to convey quality, luxury and sophistication, together with the external cladding of the GUTMANN F60* Curtain Wall Stick System.

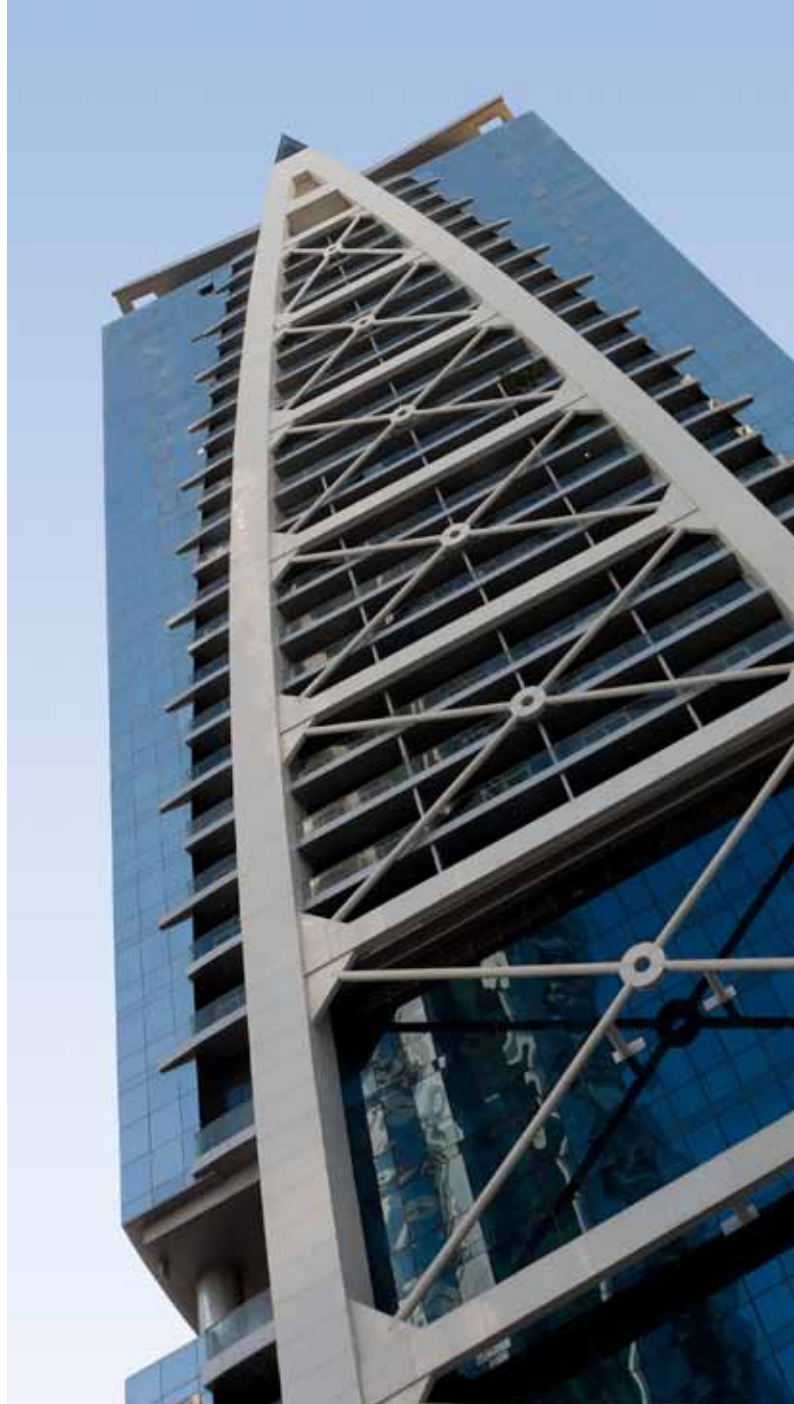


Tiffany Tower

Location	Dubai, UAE
System	GUTMANN F60* Curtain Wall System
Architect	W.S. Atkins & Partners Overseas
Client	Tiffany Realty Ud
Fabricator	Arabian Aluminium Co.
Completion	2010
Project size	41,000 m ² glazing surface, 183 m height, 41 floors

Characteristics

The Tiffany Tower is a \$100 million project located at Jumeriah Lakes. The tower uses the F60* Curtain Wall System two/four-sided structural glazing to cover the luxury facilities.



Indigo Tower

Location	Dubai, UAE
System	GUTMANN F60* Curtain Wall System
Architect	WS Atkins & Partners Overseas
Client	Jumeirah Properties Investment (B.V.I.)
Fabricator	Arabian Aluminium Co.
Completion	2008
Project size	26,000 m ² glazing surface, 132 m height, 34 floors

Characteristics

The Indigo Tower is a residential and commercial building, located in the entrance to the Jumeirah Lake Towers development. The external envelop is made from the GUTMANN F60* two/four-sided structural glazing curtain wall system. This \$61 million tower redefines affordable luxury and offers 272 residential apartments and 68 offices.

... and what can we do for your project?