



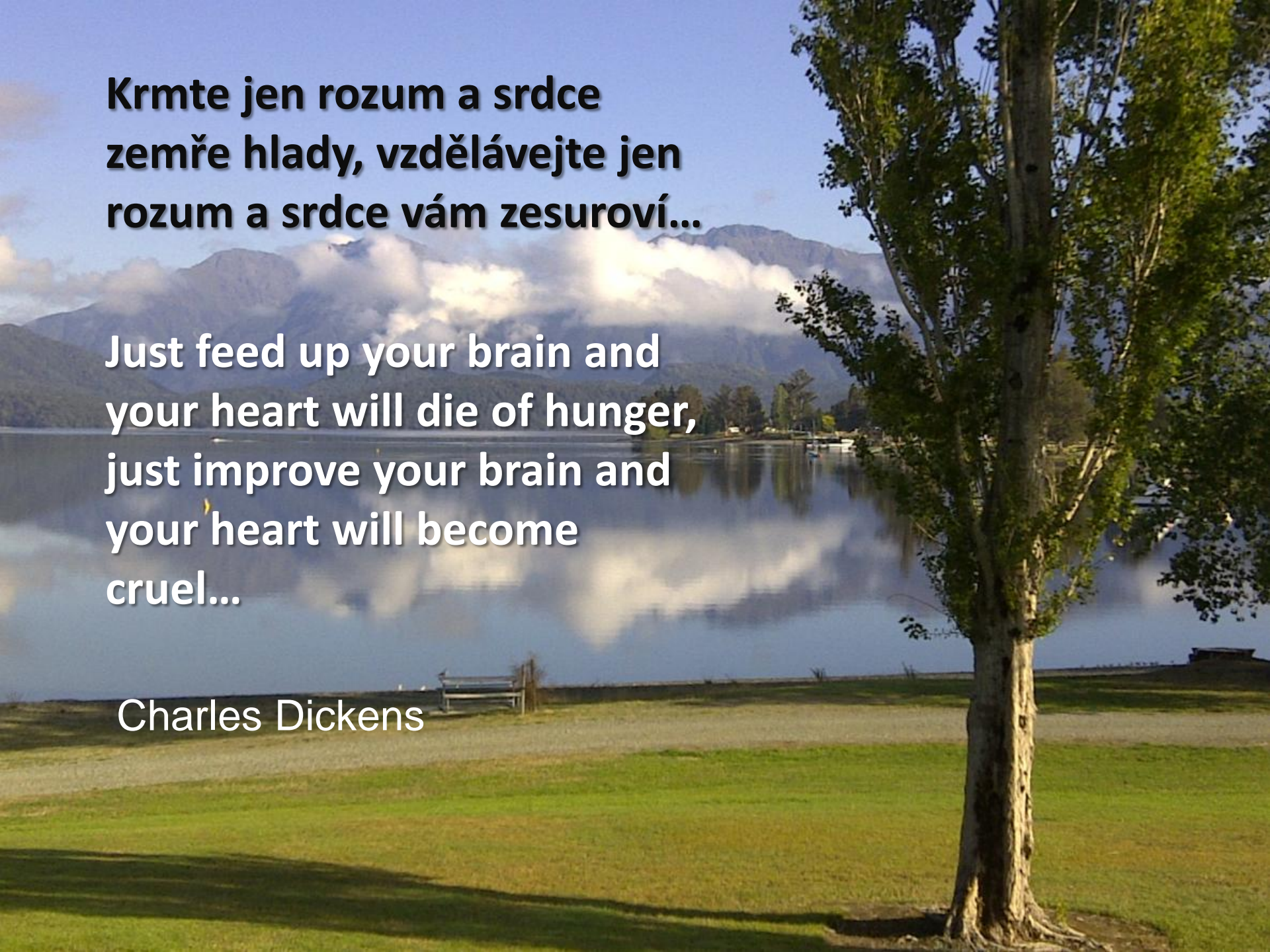
Jak specifické jsou projekty na různých kontinentech

How individual are projects on different continents

**Krmte jen rozum a srdce
zemře hlady, vzdělávejte jen
rozum a srdce vám zesuroví...**

**Just feed up your brain and
your heart will die of hunger,
just improve your brain and
your heart will become
cruel...**

Charles Dickens



BEAUTY OF THE DIVERSE WORLDS

How are projects
starting ?

Always by finding natural resonance
between **Investor's demands**
(design, finance)
and the **Architect's proposals**
(realizes investor's demand by
adding his talent, his personality)





And then ?

Then **Engineering** and **Architecture** need to tune in a common working environment, and often **project solutions are needed.**



Difficulties ?

Well, apart from some tons of paper, not really if correctly designed, tested, documented and explained.

Removing uncertainties brings trust among the stakeholders.

Are international projects really different ?

Lots of different behaviors, but
always expectations on
quality, efficiency, budget and
attention to customers



Akasya Project - Istanbul



Akasya Project - Istanbul



- **165m** high tower block
and 60m high horizontal blocks
- **Clients' wish**
"We want sliding doors up to 160m height"
- **Facade Consultants**
"We are not sure of using sliding solutions at 165m height and under extreme weather conditions"

Akasya Project - Istanbul



A Tailored Solution

- Numerous meetings with investor, contractor and consultants to understand their request
 - Changes in structural solutions and R&D tailor made solution
 - Development of new accessories (sealing items, hardware) and use of special sealant materials
 - Tested performances before contract
- Outperforming the competitions sliding systems. 1350 Pa water resistance (vs 900 Pa)

Varyap Meridian - Istanbul



Project was awarded **The Best Architecture Project**
in International Property Awards 2010⁽¹⁾

(1) Aka 'The Property Oscars'

Varyap Meridian - Istanbul

- **165m** high (60-storey) tower with 1,500 residential units, five-star hotel, offices and conference facilities with landscaped public areas
- Architect : RMJM Architecture (USA)
- Facade Consultant : CWG Consulting



Varyap Meridian - Istanbul

A Tailored Solution

- Unitized Curtain Wall **Elegance 72**
- Fine tuned to fulfil augmented demands as thermal, wind loads, water tightness, and request on seismic load (earthquake 7.6° in '99)
- Alongside the adjustment of profiles, development of new hardware
- Project proposal was documented with tests on mechanical stability of individual elements as well as of the whole curtain(1)



(1) including implemented elements and resistance to drop-out

Coop - Manchester



Coop - Manchester

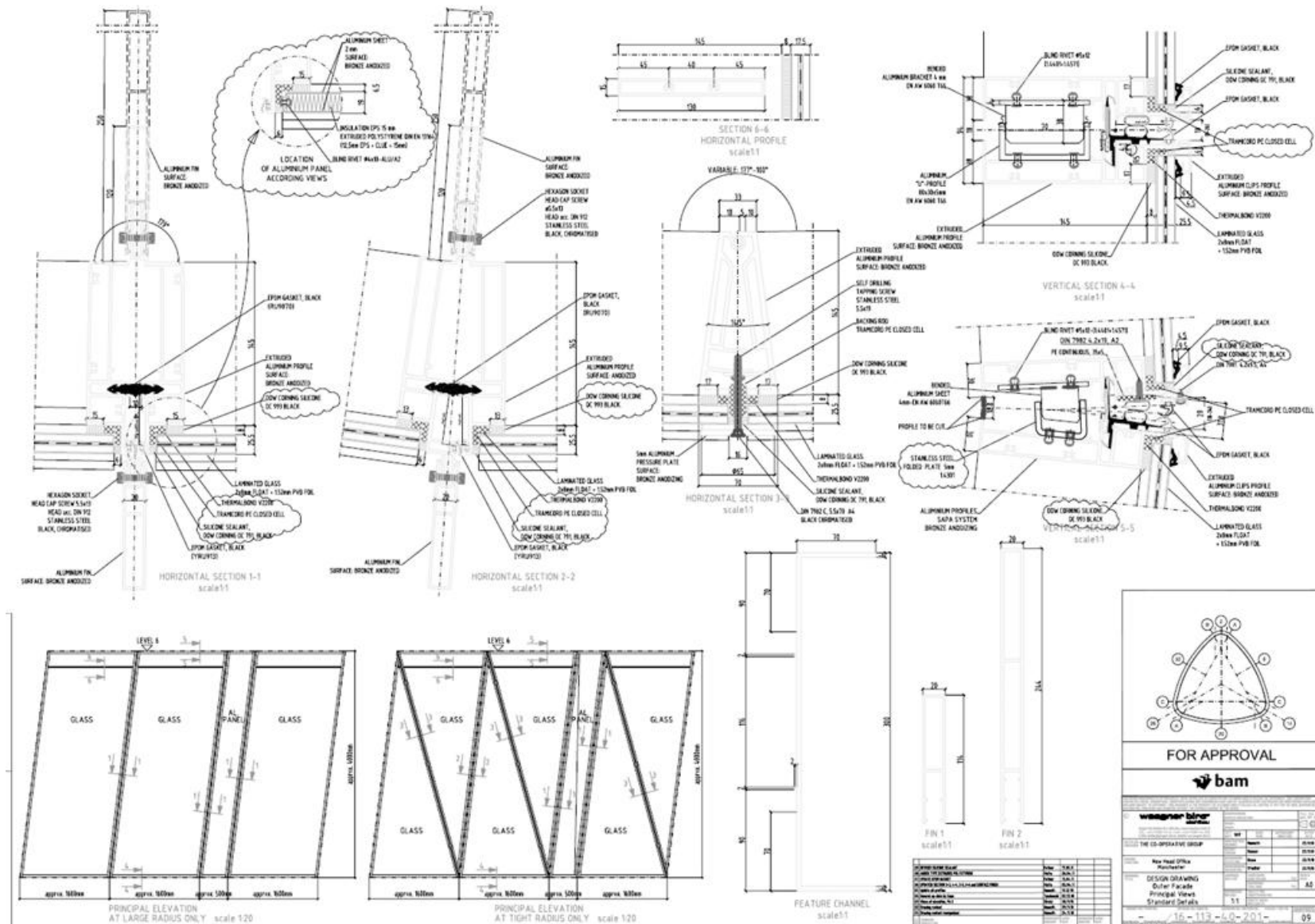


A Tailored Solution

- Double skin facade
 - Inner : Unitized CW **Elegance 72**
 - Outer: Unitized CW **Elegance 72**
- Complicated geometric surface
 - slopes in all directions
 - every vertical mullion is under angle in two directions
 - every element is bended
 - every piece surface is a 3D element
 - every element is different⁽¹⁾

(1) For the 2 first floors 700 unique elements !

Coop - Manchester

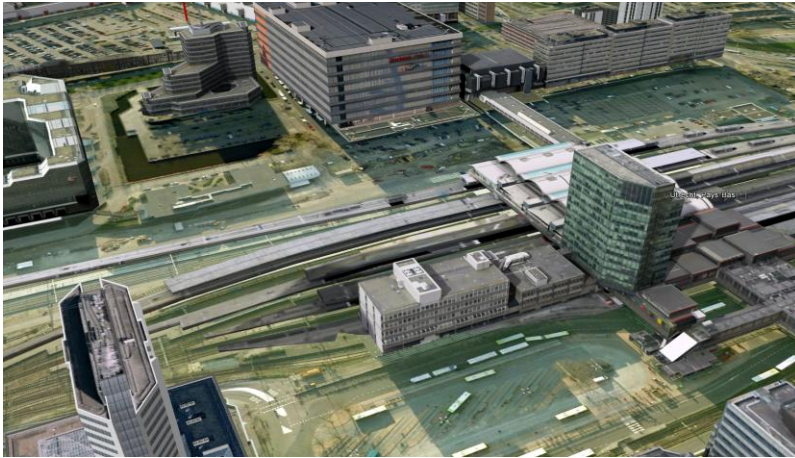


Coop - Manchester



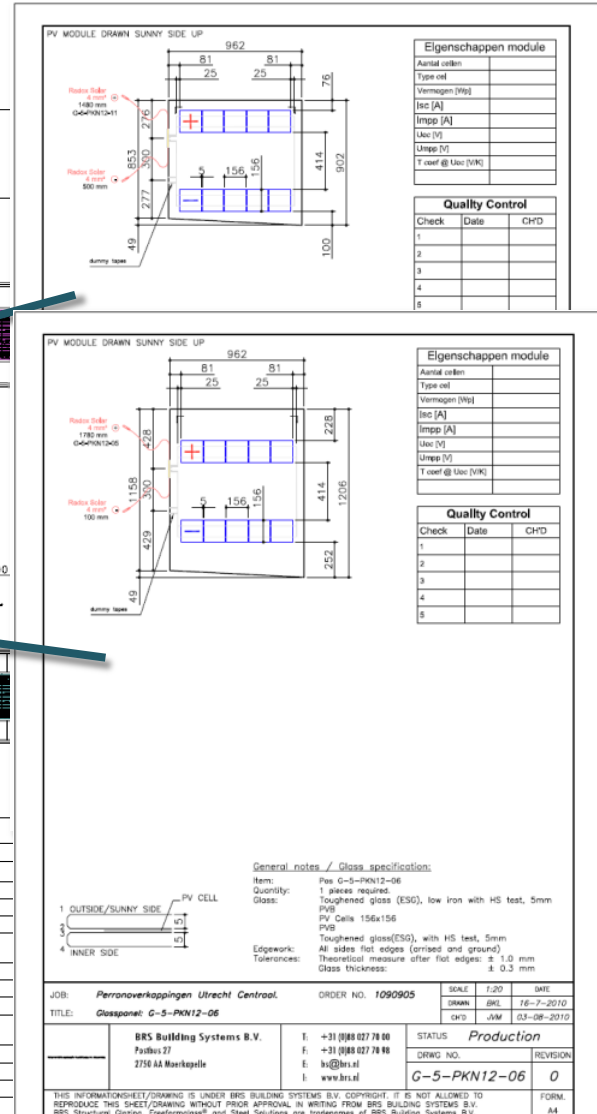


Utrecht CS Station - Holland



- Part of Utrecht Master Plan
- Platforms BIPV curved roofs
- Architect : Benthem Crouwel



[illegible]

Utrecht CS Station - Holland

Multiple modules configurations



Total :
1225
different drawings

Utrecht CS Station - Holland

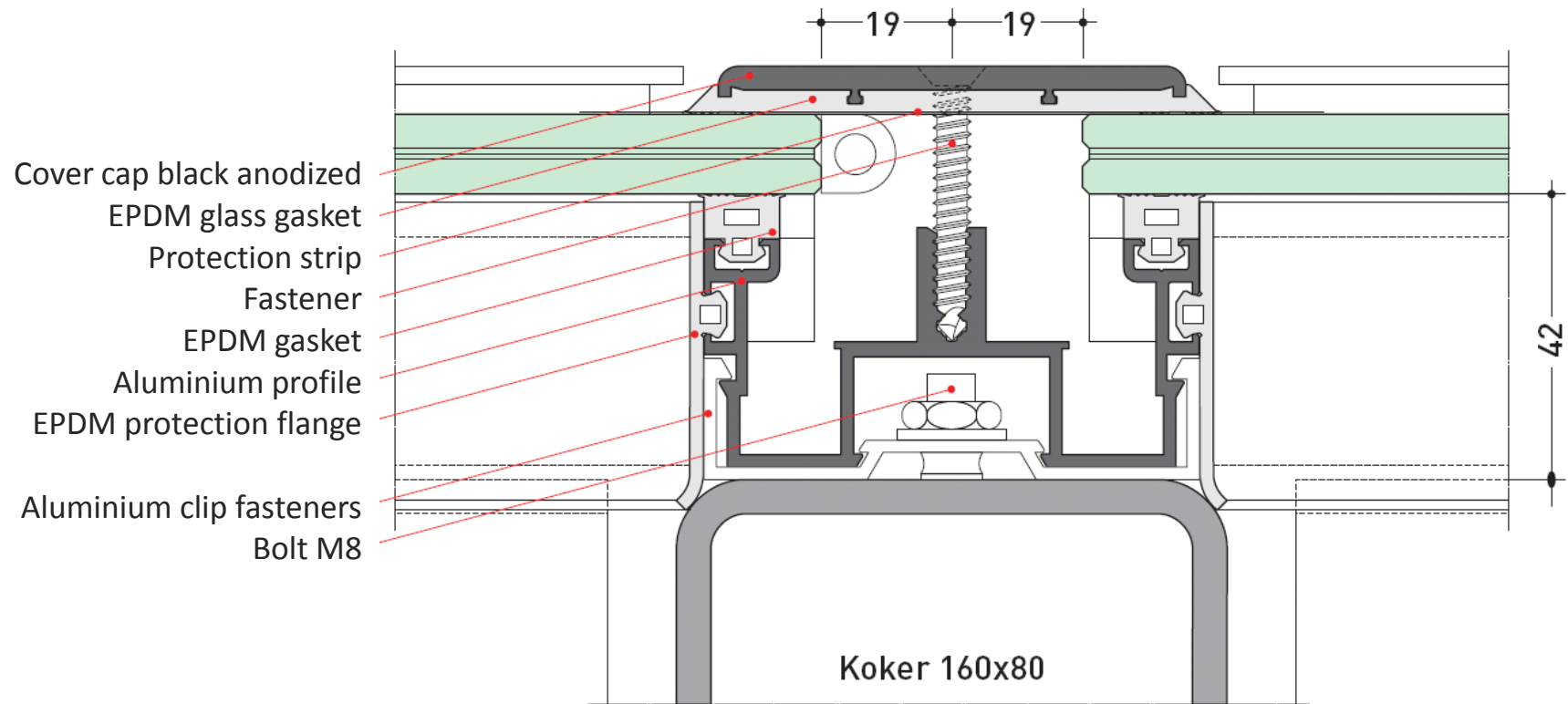


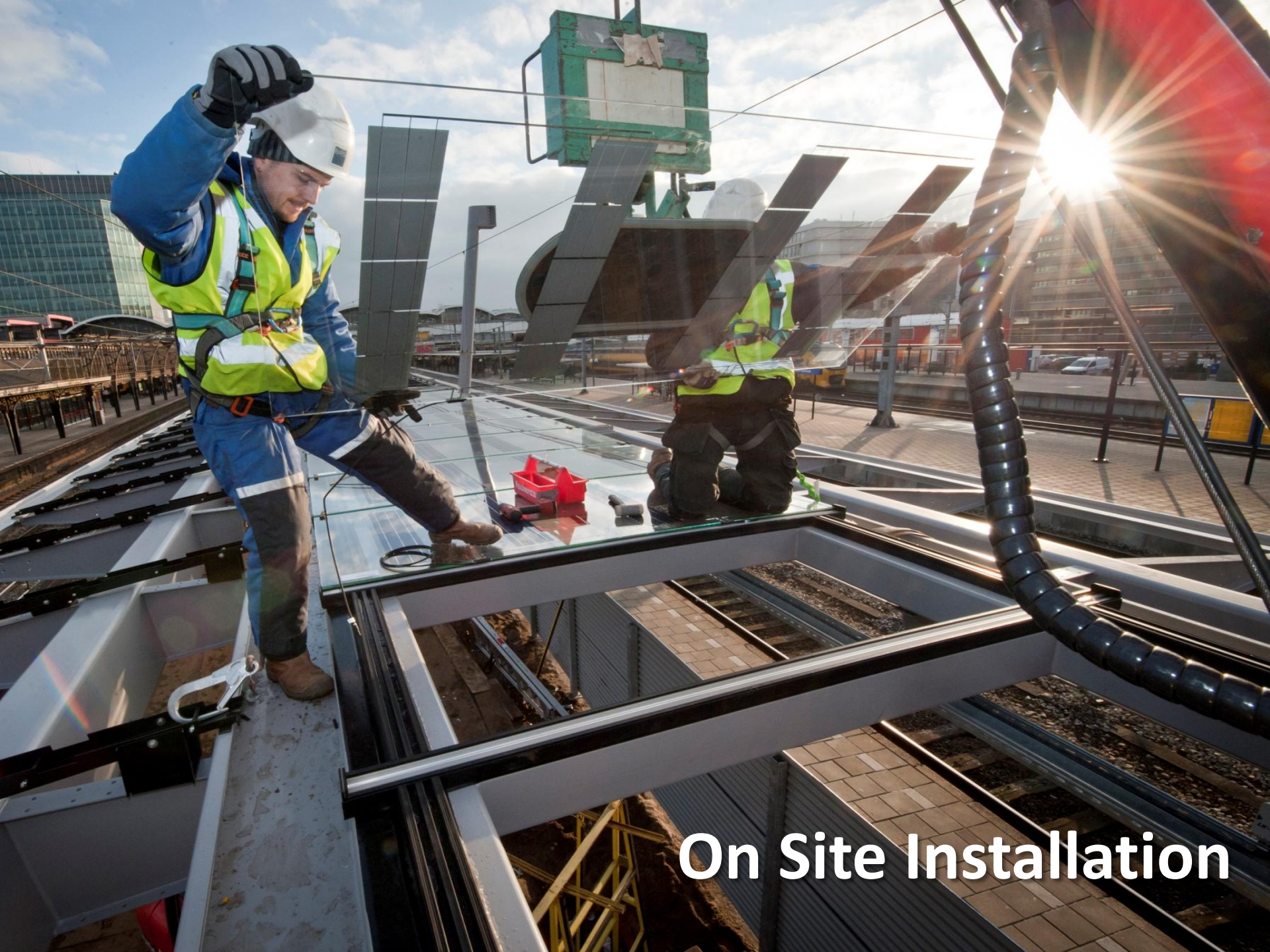
Again big
files...

But needed
seeing the
context.

Utrecht CS Station - Holland

Bespoke aluminium system by Sapa





On Site Installation

Utrecht CS Station - Holland

A Tailored Solution

- Bespoke aluminium system for this cold curved glass roof, integrated wire ways, new accessories, ...
- Very strict planning. Efficient collaborations between stakeholders and teams.
- Won **Aluminium BeNeLux Award 2011** for Building Renovation Project

Antilia House - Mumbai



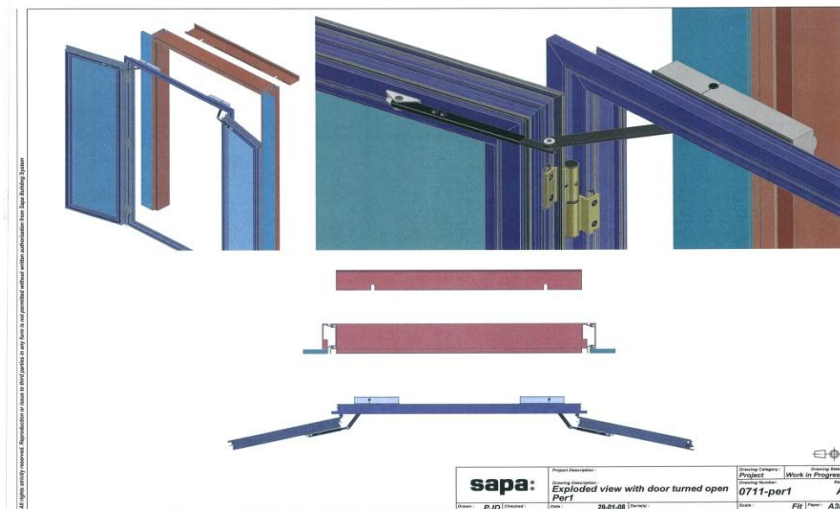
- The „Greenest of All Buildings“. Façade will be covered in foliage, with living walls enclosing all four sides, hanging gardens and a green rooftop...
- \$1 billion family home built for India's richest man.
- Architects: Perkins & Will (USA)
- Consultant : Arup - Singapore
- 173 m high
- 37000 m2 available surface

Antilia House - Mumbai



A Tailored Solution

- Specific upgraded doors system
- 180° openable
- Water tightness up to 450 Pa with no threshold solution
- Flexion of 1/175 or 15 mm maximum at 2500 Pa



A group of six young people, three women and three men, are standing in a cornfield. They are positioned behind a row of corn plants, with some holding the stalks. The corn plants are tall and green, with some yellowing at the top. The background is a clear, light blue sky. The people are dressed in casual clothing, including t-shirts, a polo shirt, a sweater, and a striped shirt. They are looking in various directions, some towards the camera and others away.

**International projects are
discovery journeys with learnings**



**Thank you
for your
attention**