

7. národní konference

České komory lehkých obvodových pláštů

EUR CONGRESS CENTER

NUVOLA DI FUKSAS

Saul Papaleo
IBP & TAS Manager
Building Project Coordinator
AGC Flat Glass Italy

Prague
19th of March 2014



NUVOLA

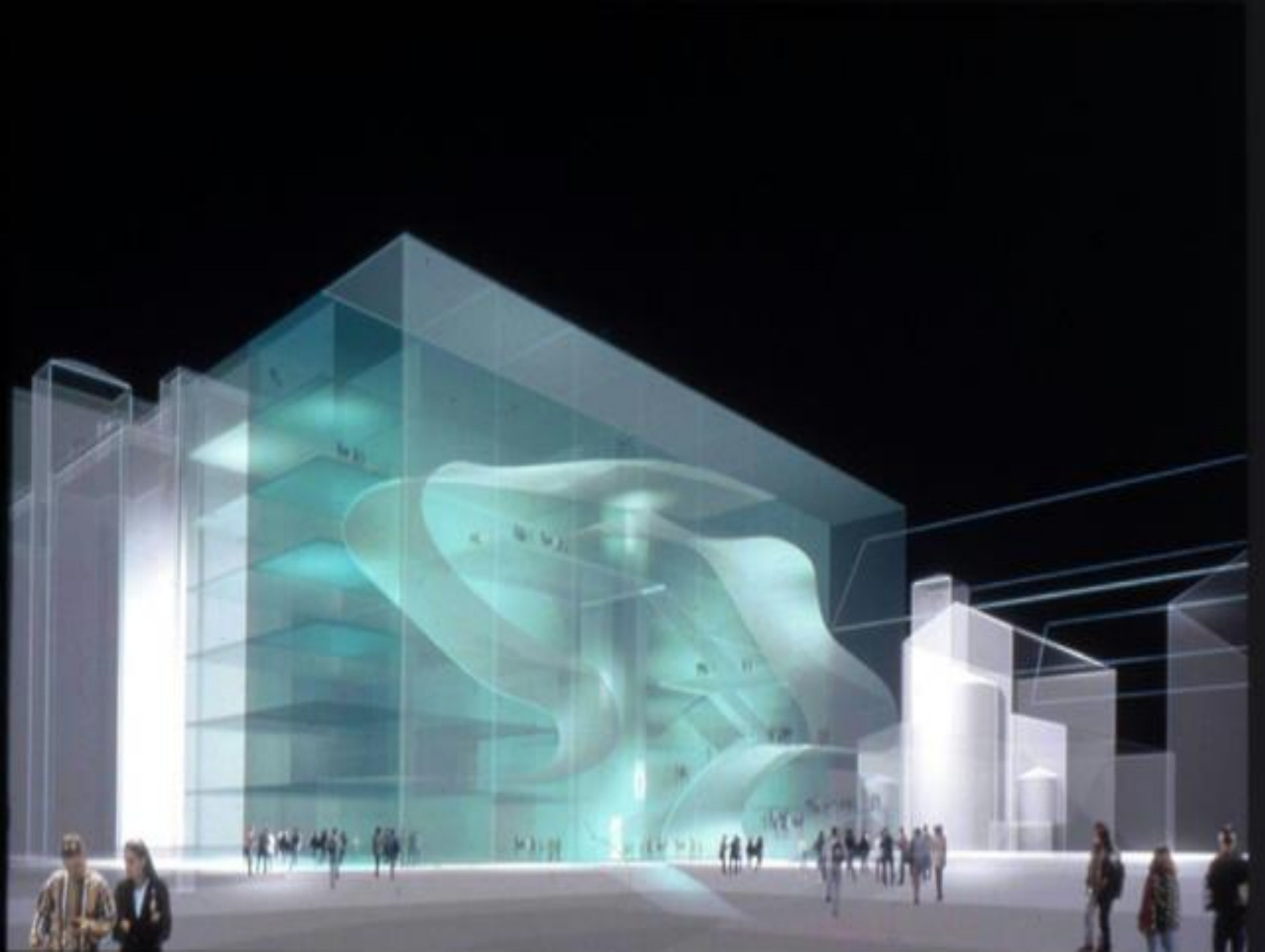
FUKSAS



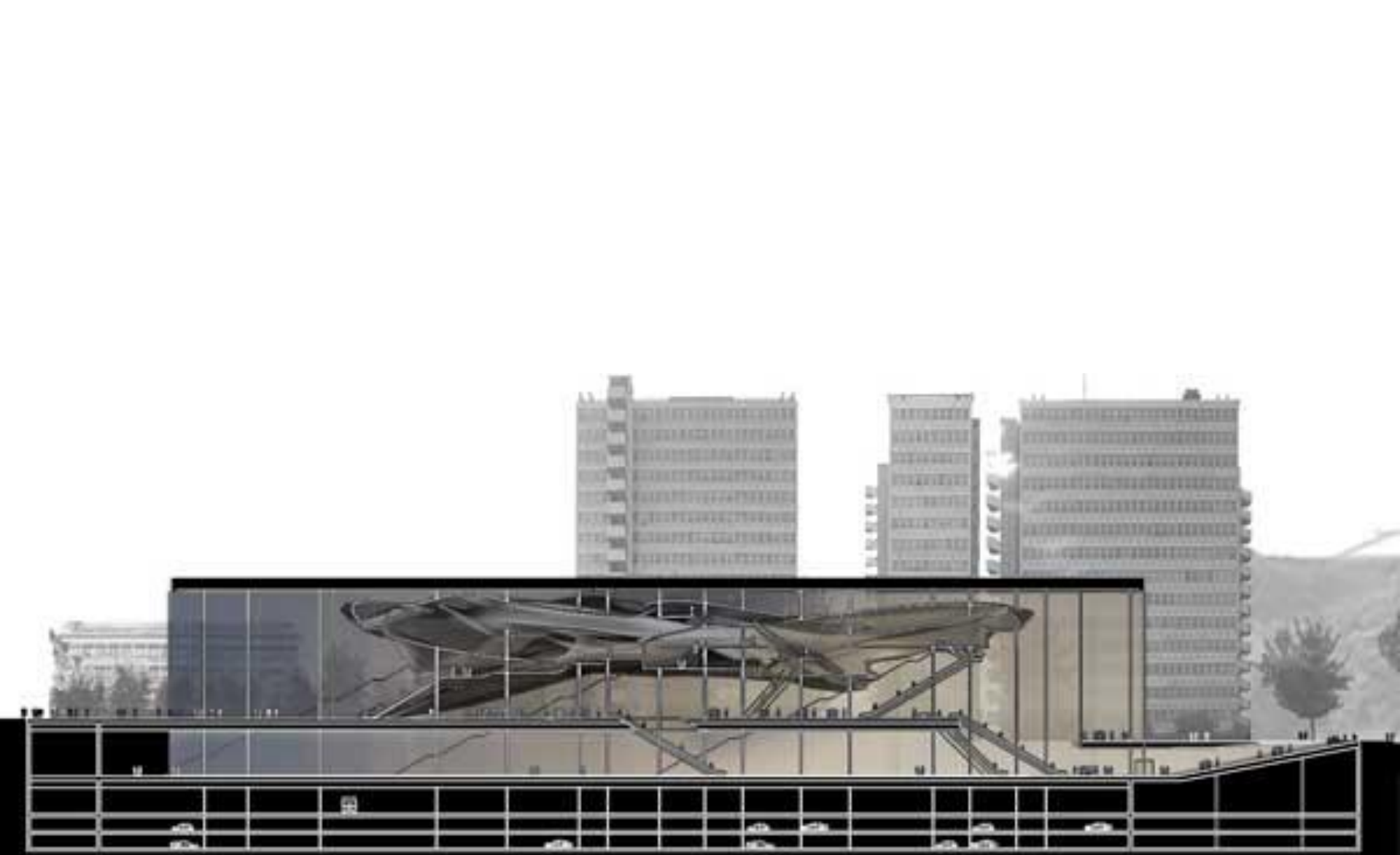
AGC

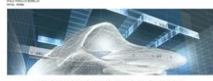
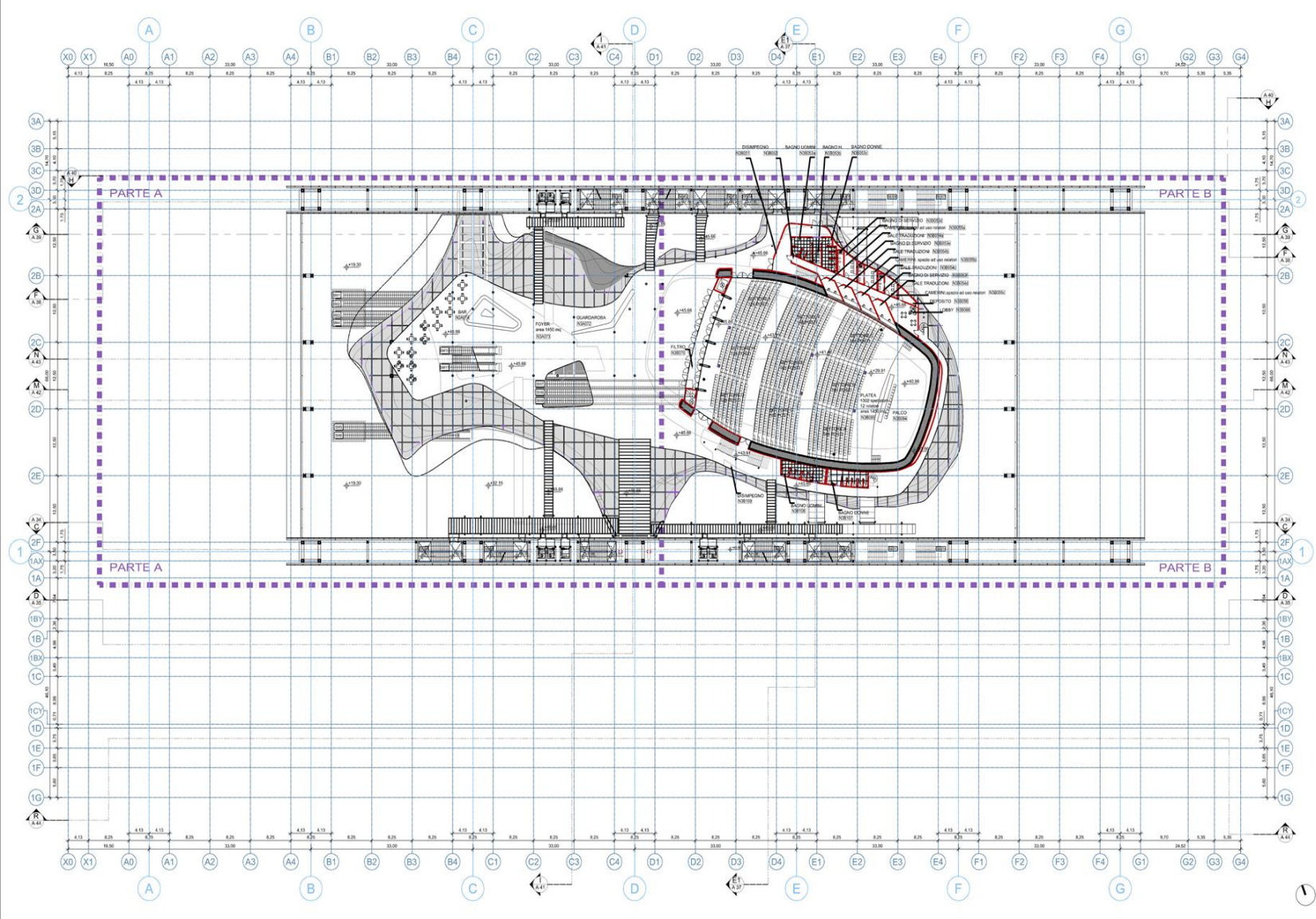






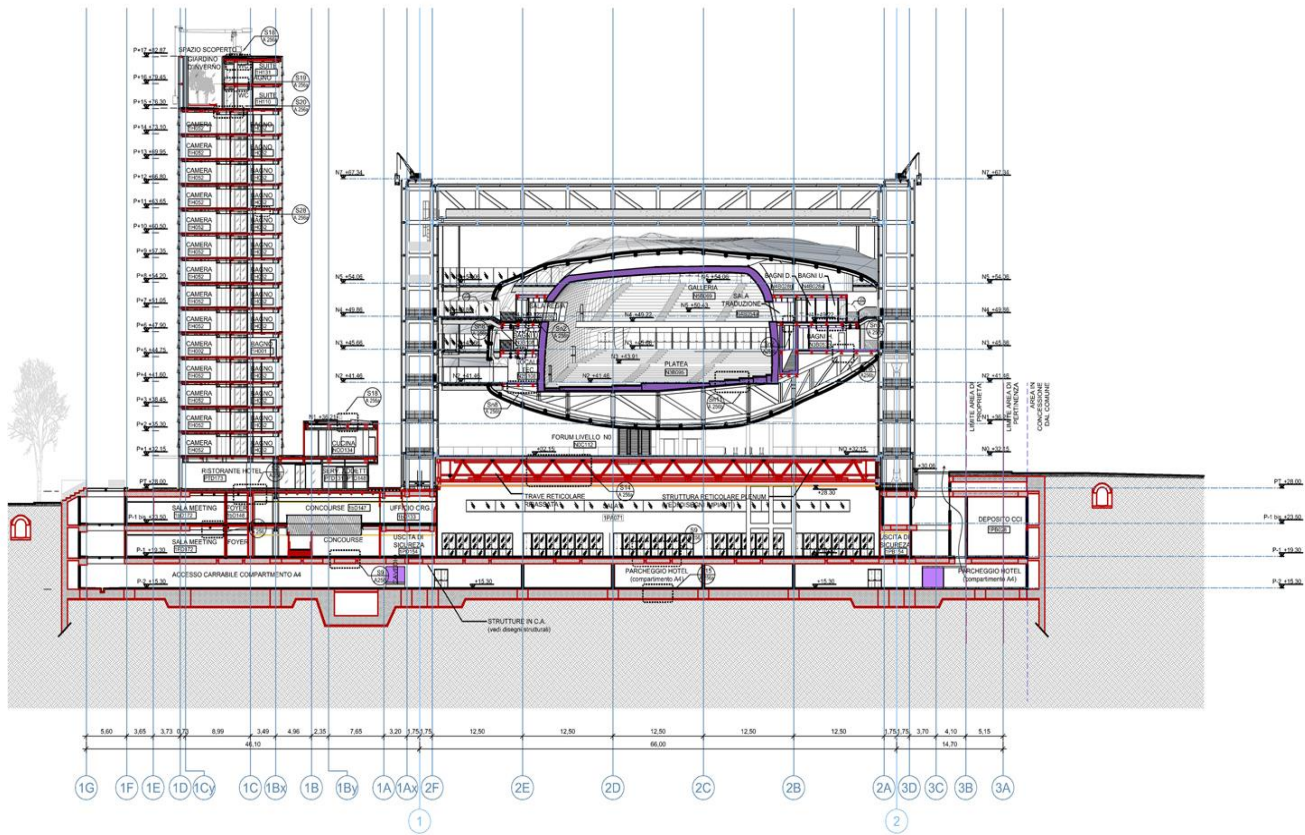






CENTRO CONGRESSI ITALIA - EUR
 COMUNE DI ROMA
 PROGETTO ESECUTIVO

LIVELLO N-3 G +45,66 1:200





CENTRO CONGRESSI ITALIA - EUR
 COMUNE DI ROMA
 PROGETTO ESECUTIVO
SEZIONE E-1E1 | 1:200





Condotte SpA

EUR S.p.A.





EUR S.p.A.

HOTEL DEL GARDINO

Condotta

Condotta

Condotta

ICE FDN

ICE MARBOLISTAR

WOK

FDN

WOK

EA













3

Condotta













1350SJP

5-125

1350SJP





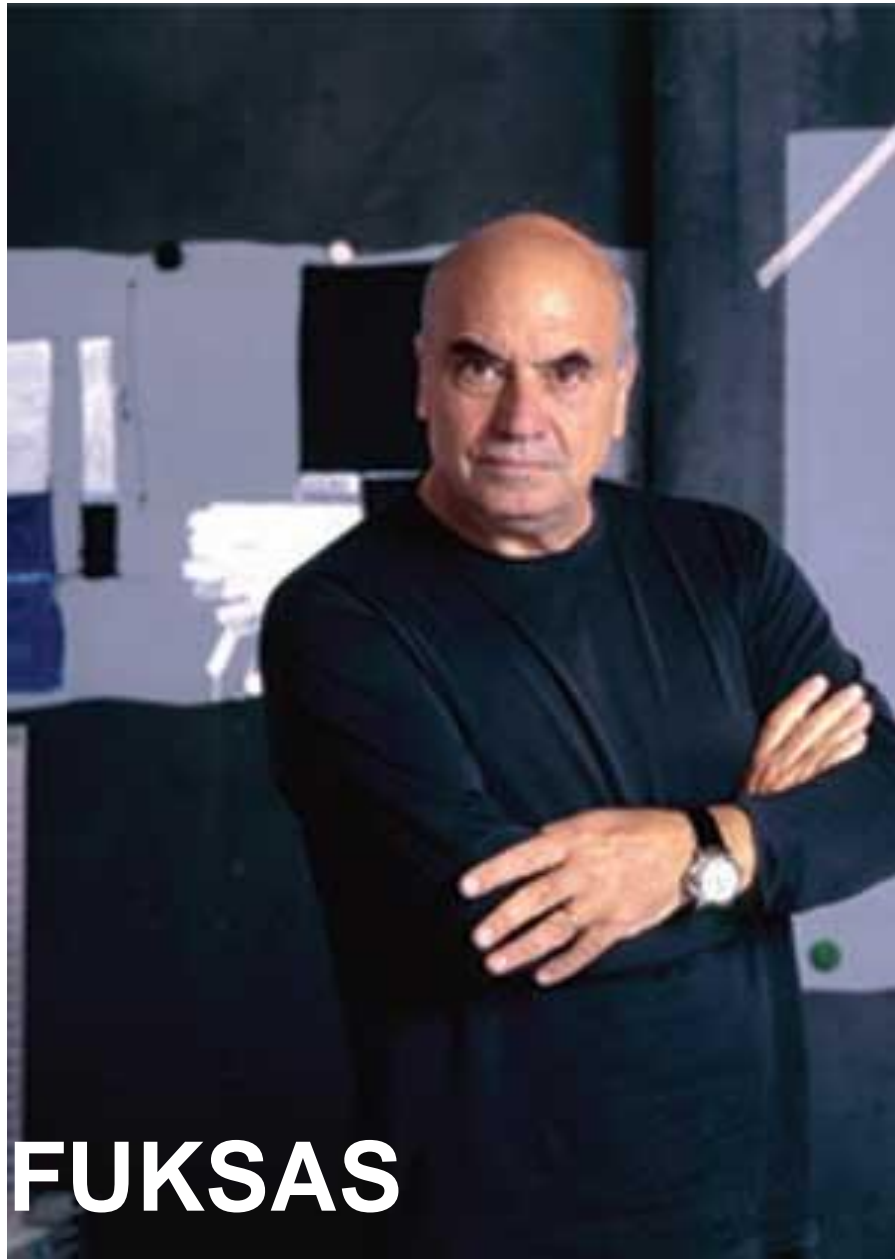
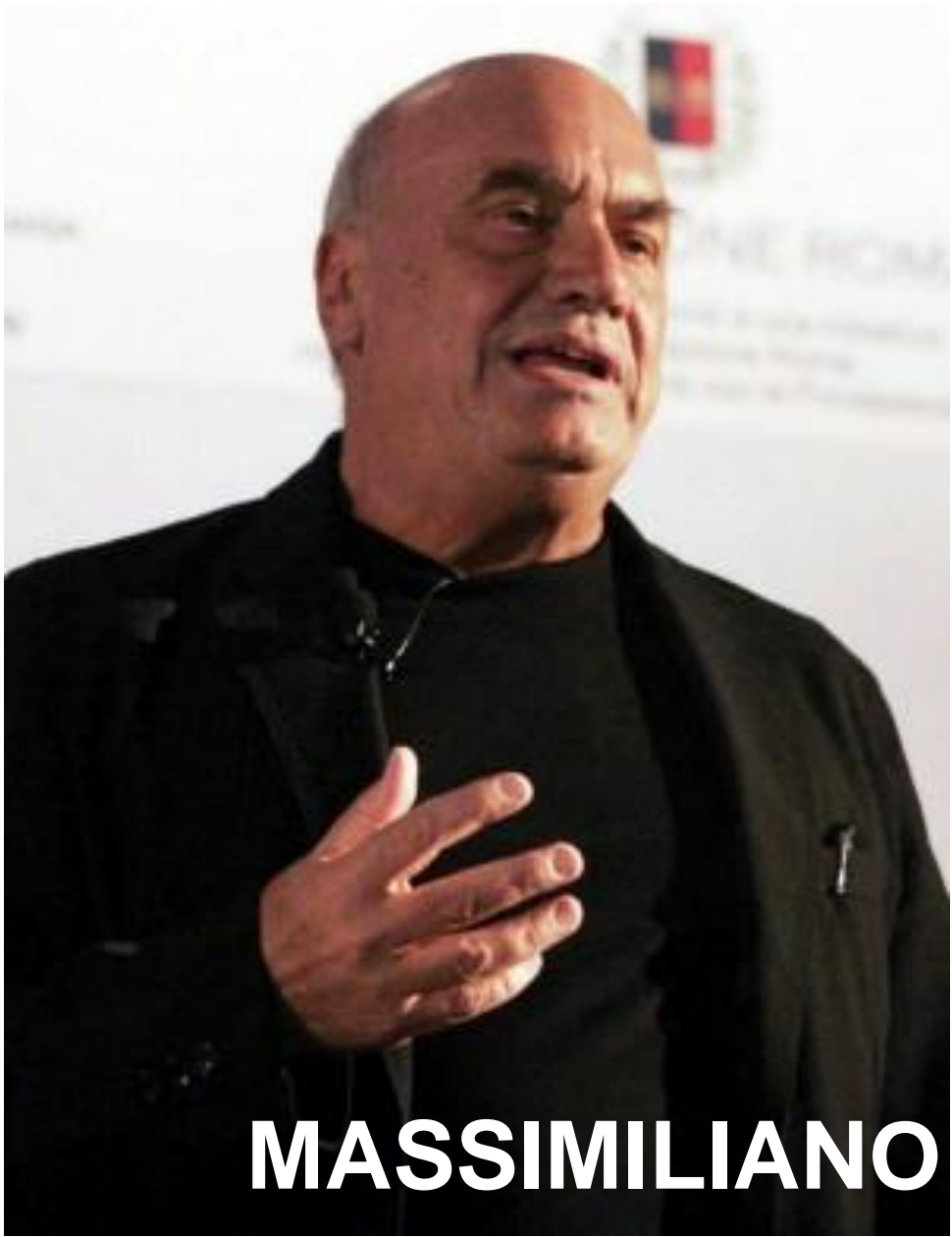












MASSIMILIANO FUKSAS



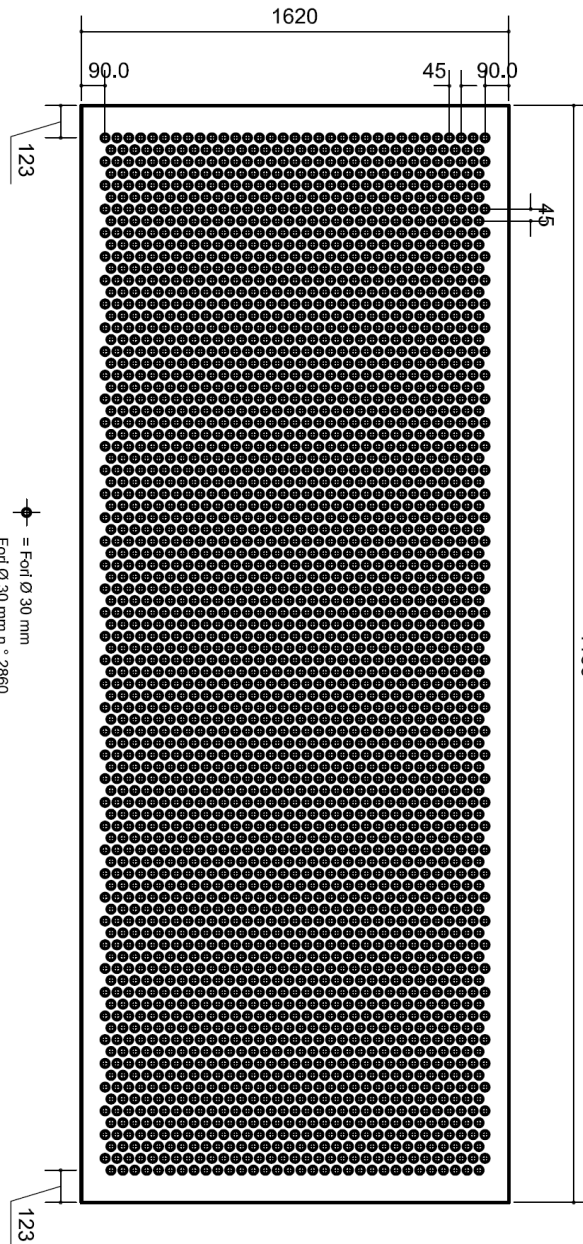
FUKSAS & ROME MAJOR



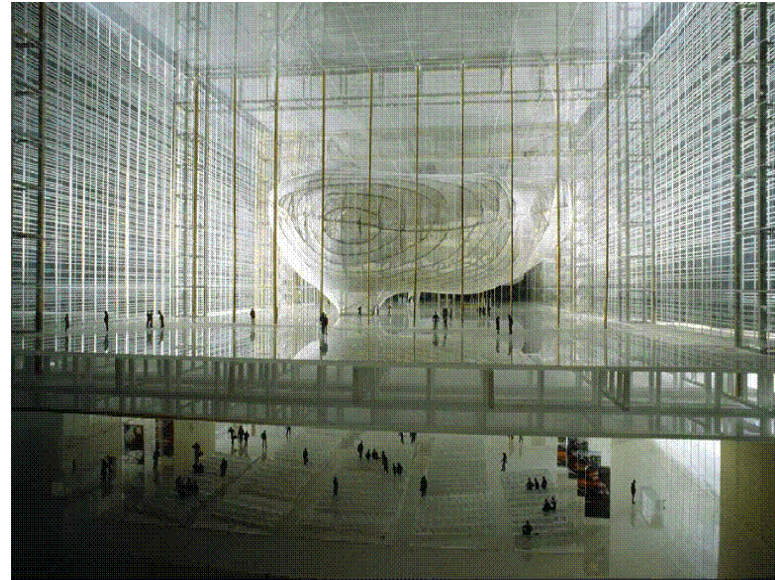


TECHNICAL ASPECTS

1010.4 LAMINATED CLEARVISION GLASS FEASIBILITY



Aggiornamento 12-11-2009



2860 holes

- Production time → 8 hours each glass
- Breakages during production → too risky
- Handling → cracks
- Laminated glass → No perfect overlapping
- Transport → cracks
- Installation → breakages for weakness
- Load resistance → Pressure and depressure

SOLUTION → LAMELLAS



**1010.x Eva safe Laminated
Clearvision (Low-iron)**

Dimension 1620 X 750 mm
Loads easy to calculate

Eva safe
Special interlayer
Protection against delamination
Higher temperature resistance

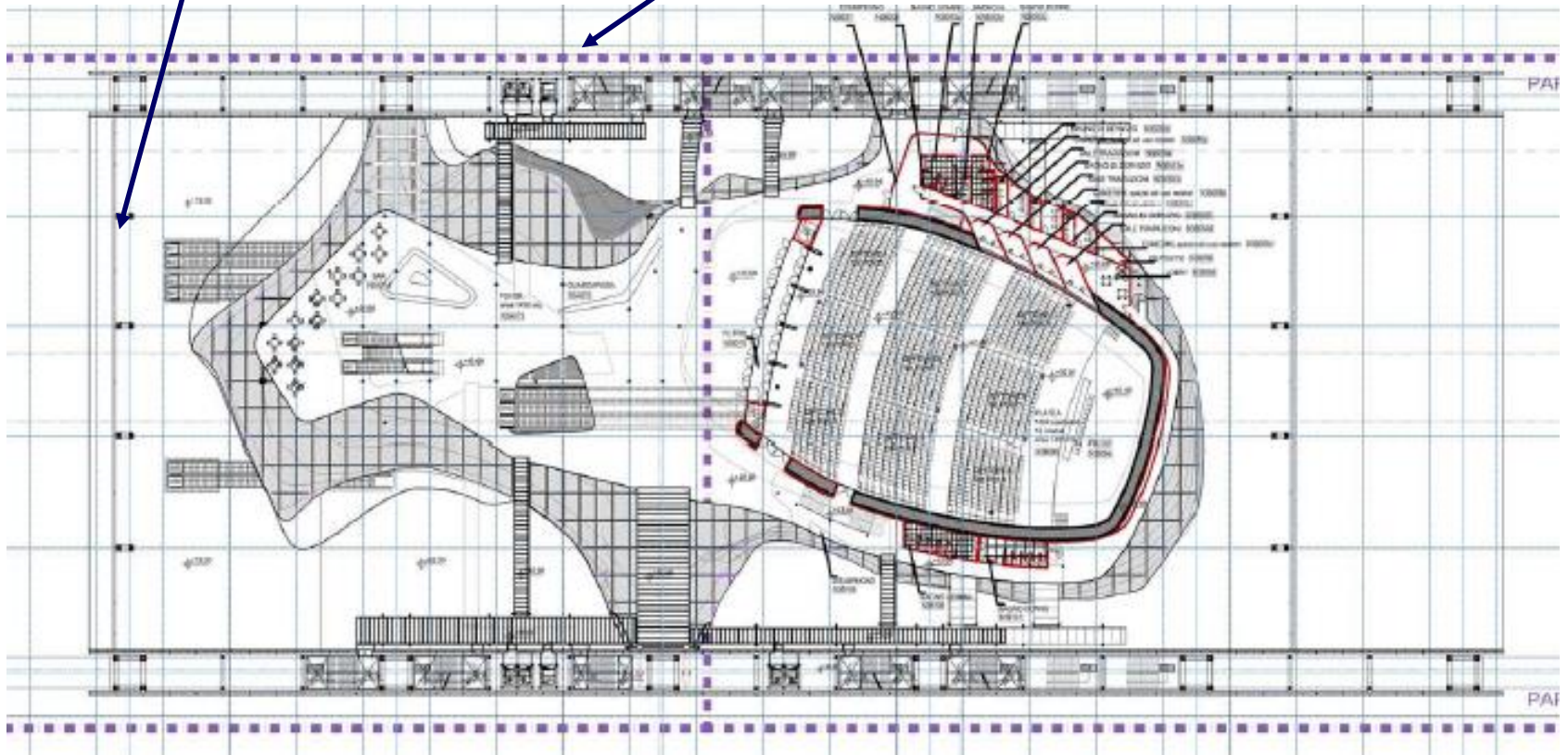
Moustier and Boussois
Clearvision 10mm in 4500 x 3300



PERFORMANCES

Single skin
North-South

Double skin
East-West



PERFORMANCES

SINGLE SKIN

North → No necessary to use solar control coating

South → Protected by another building – Same solution of north façade

12mm Clearvision / 16mm argon 90% / 66.2 Stratophone Top 1.0

DOUBLE SKIN

External glass → Max neutrality

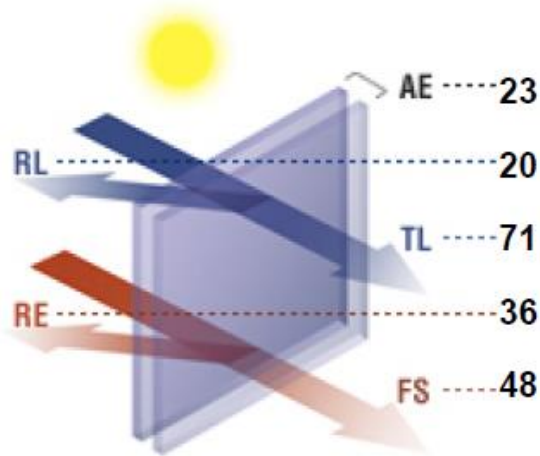
1010.x Laminated Clearvision with Eva safe

Inner IGU → East – West exposure – Solar control coating must be used

INNER IGU

FIRST COMPOSITION

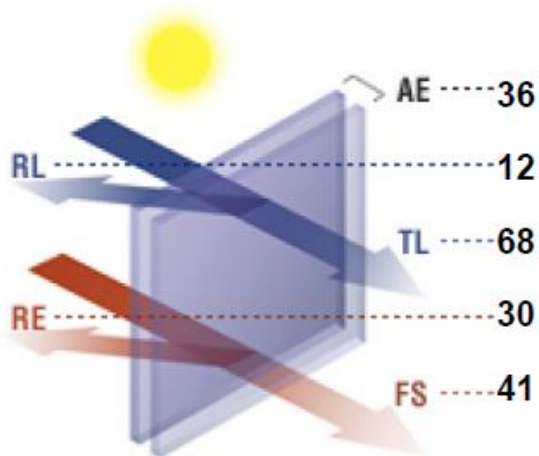
Stratobel 66.2 (6 mm Planibel Clearvision + 0.76 mm clear pvb + 6 mm Planibel Clearvision) - 16 mm Air - Stratobel 88.2 (8 mm Planibel Top 1.0 on Clearvision (not standard in catalogue) pos.3 + 0.76 mm clear pvb + 8 mm Planibel Clearvision)



TOO HIGH SOLAR FACTOR

SECOND COMPOSITION

Stratobel 88.2 (8 mm Planibel Clearvision + 0.76 mm clear pvb + 8 mm Planibel Energy N on Clearvision pos.2) - 16 mm Argon 90% - Stratobel 66.2

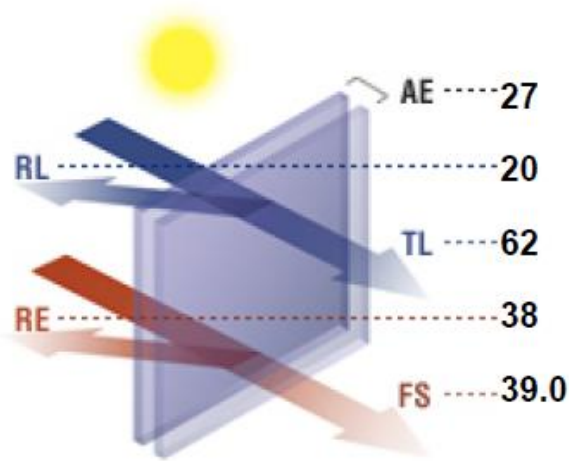


**SOLAR FACTOR ALMOST
ACCETTABLE**

**GREEN ASPECT
DUE TO ENERGY N AND STRATOBEL**

FINAL COMPOSITION

10 mm Stopray Clearvision-60 T pos.2 (not standard in catalogue) - 16 mm Argon 90% - Stratophone Clearvision 66.2 (2X Planibel Clearvision)



THANK YOU